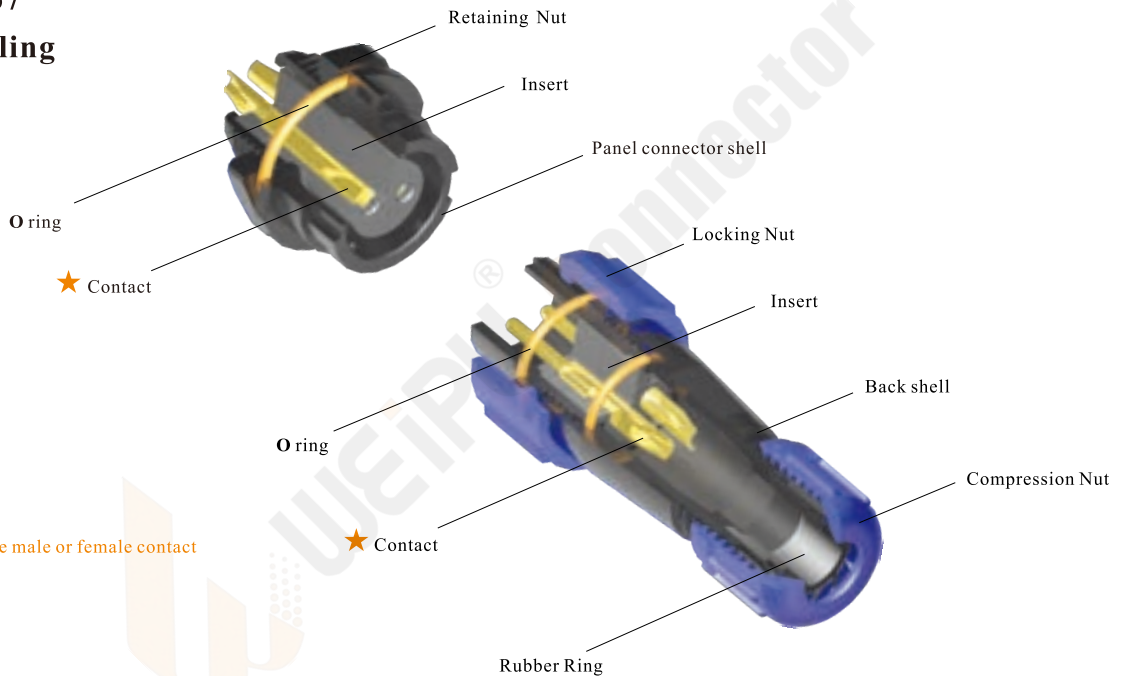


IP67



06

- SY Series IP67
- Bayonet coupling



**Material and spec**

Coupling	Bayonet	
Shell material	PC, Nylon66, fire resistance: V-0	
Insert material	PPS, max temperature 260 °C	
Contact material	Brass with gold plating	
Termination	Solder: SY11, SY13, SY17, SY21, SY25, SY29 Crimp: SY17, SY21, SY25, SY29 Screw: SY21, SY25, SY29(Ø2.5, Ø3, Ø3.5mm contact)	
Cable outer diameter range	SY11: I:3-4mm, II:4-6.5mm SY17: 6-10mm SY25: I:10-14mm, II: 7-12mm	SY13: I: 4-6.5mm, II: 5-8mm SY21: I: 4.5-7mm, II: 7-12mm III: 5-9mm SY29: I: 9-13mm, II: 13-16mm
IP rating	IP67	
Mating cycle	500	
Temperature range	-40°C ~ +85°C; SY25 Data: -20°C ~ +70°C	
Insulation resistance	2000 MΩ	

SY25 Series



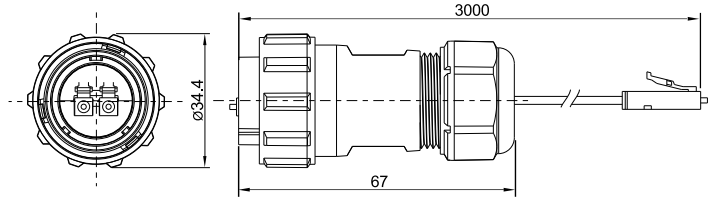
SY25



Plug with LC adapter  
Mate with SY2511, SY2511C,  
SY2512, SY2513, SY2515

SY2510/PLC

Wire length:  
0.5m  
1.0m  
1.5m  
2.0m  
3.0m



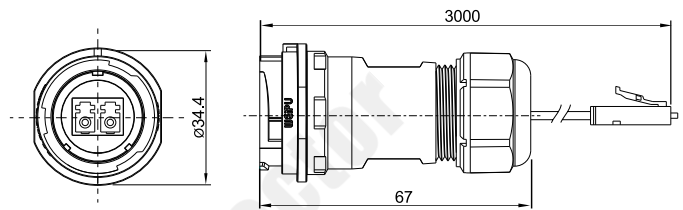
★ Wire length can be customized

06



Receptacle with LC adapter C  
Mate with SY2510

SY2511C/SLC

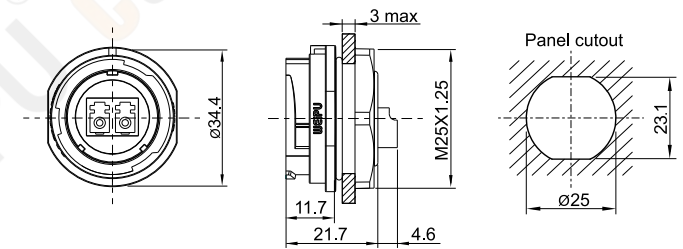


★ Wire length can be customized



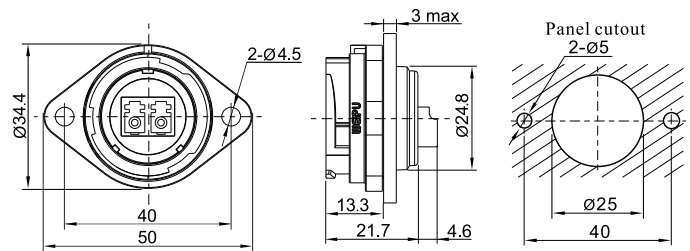
Rear-nut mount receptacle  
with LC adapter  
Mate with SY2510

SY2512/SLC



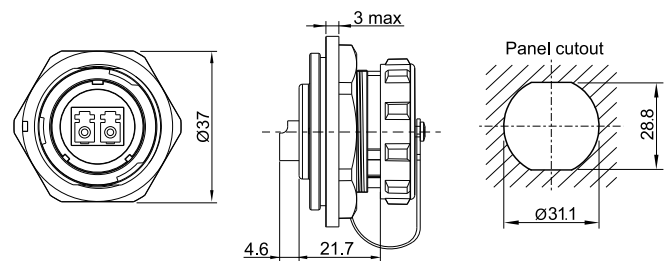
2-hole flange  
with LC adapter  
Mate with SY2510

SY2513/SLC



Front-nut mount  
with LC adapter  
Mate with SY2510

SY2515/SLC



**SY25 Series**



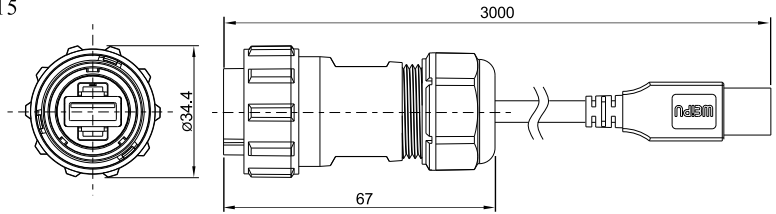
**SY25**



Plug with USB3.0 adapter  
Mate with SY2511, SY2511C,  
SY2512, SY2513, SY2515

**SY2510/PUSB3.0**

Wire length:  
0.5m  
1.0m  
1.5m  
2.0m  
3.0m

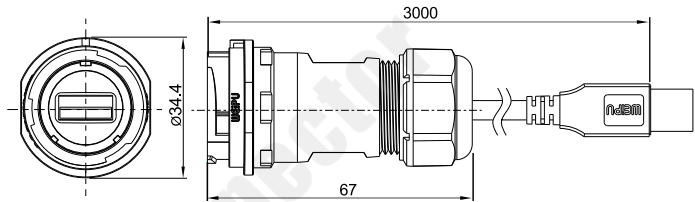


★ Wire length can be customized



Receptacle with USB3.0 adapter C  
Mate with SY2510

**SY2511C/SUSB3.0**

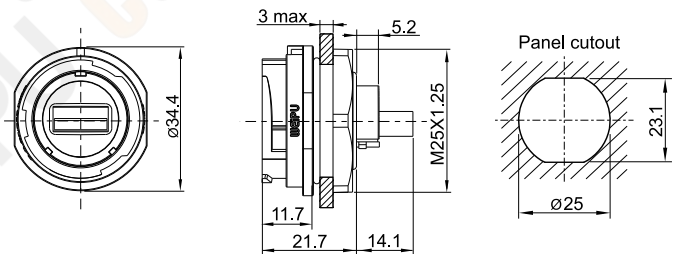


★ Wire length can be customized



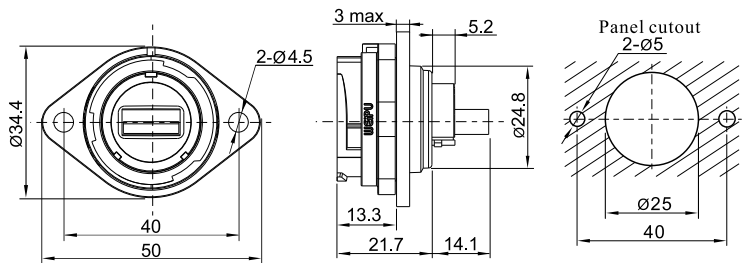
Rear-nut mount receptacle  
with USB3.0 adapter  
Mate with SY2510

**SY2512/SUSB3.0**



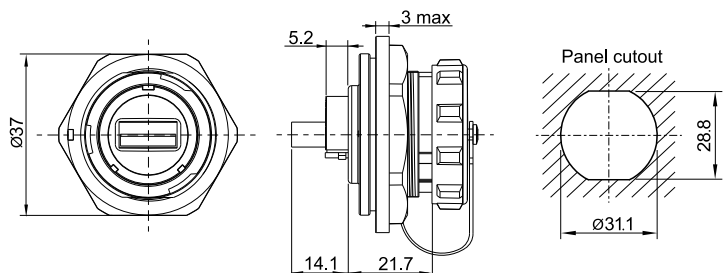
2-hole flange  
with USB3.0 adapter  
Mate with SY2510

**SY2513/SUSB3.0**



Front-nut mount  
with USB3.0 adapter  
Mate with SY2510

**SY2515/SUSB3.0**





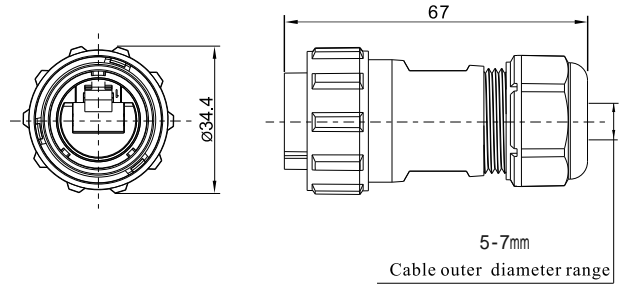
# SY25 Series

# SY25



Plug with RJ45 adapter  
Mate with SY2511, SY2511C,  
SY2512, SY2513, SY2515

**SY2510/PRJ45**



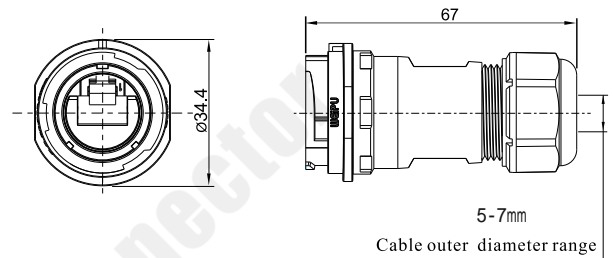
★ Wire length can be customized

06



Receptacle with RJ45 adapter C  
Mate with SY2510

**SY2511C/SRJ45**

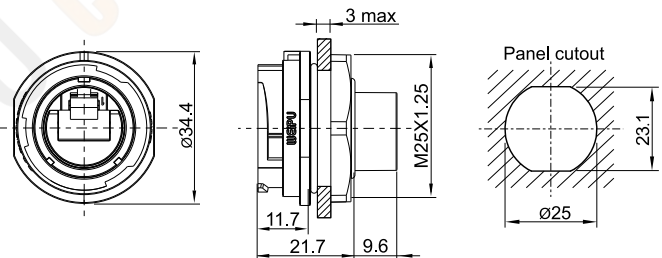


★ Wire length can be customized



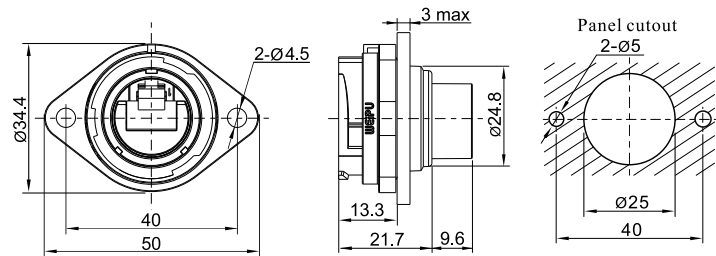
Rear-nut mount receptacle  
with RJ45 adapter  
Mate with SY2510

**SY2512/SRJ45**



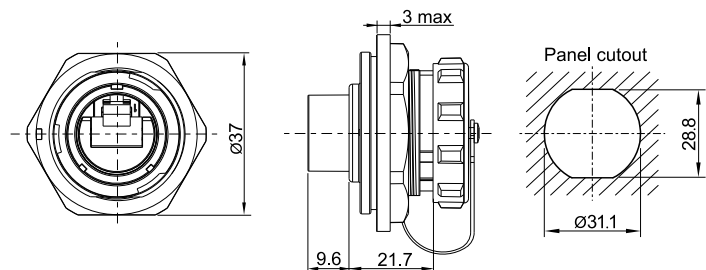
2-hole flange  
with RJ45 adapter  
Mate with SY2510

**SY2513/SRJ45**



Front-nut mount  
with RJ45 adapter  
Mate with SY2510

**SY2515/SRJ45**



**SY25 Series**



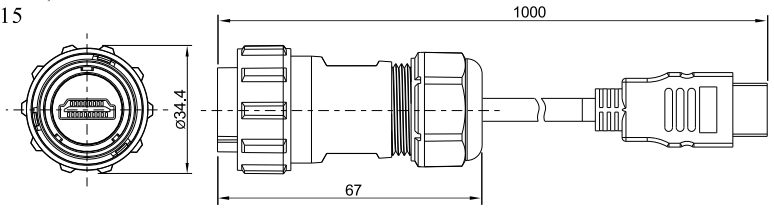
**SY25**



Plug with HDMI adapter  
Mate with SY2511, SY2511C,  
SY2512, SY2513, SY2515

**SY2510/PHDMI2.0**

Wire length:  
0.5m  
1.0m  
1.5m  
2.0m  
3.0m

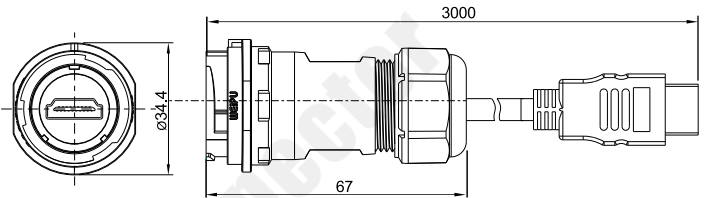


★ Wire length can be customized



Rreceptacle with  
HDMI2.0 adapter C  
Mate with SY2511, SY2511C,  
SY2512, SY2513, SY2515

**SY2511C/SHDMI2.0**

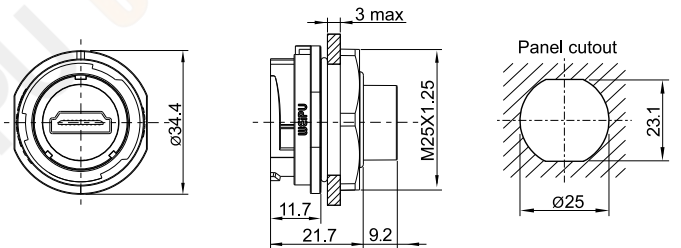


★ Wire length can be customized



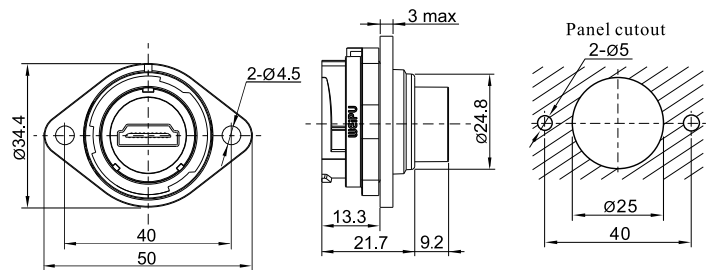
Rear-nut mount receptacle  
with HDMI2.0 adapter  
Mate with SY2510

**SY2512/SHDMI2.0**



2-hole flange  
with HDMI2.0 adapter  
Mate with SY2510

**SY2513/SHDMI2.0**



Front-nut mount  
with HDMI2.0 adapter  
Mate with SY2510

**SY2515/SHDMI2.0**

